



A Lasting Legacy for just \$100

TLC teams with local
charity to offer a smart
choice for Climate Action
Dividend

*by Tom Arnold
Manager, Member Care*

Imagine the difference you could make.

At the end of June, the government of B.C. will be issuing \$100 to each B.C. resident. The "Climate Action Dividend", as it is called, is a rebate on the provincial Carbon Tax initiative, and the government has challenged British Columbians to use it wisely to help fight climate change.

Roughly 4.1 million people live in B.C. Imagine if just 10% of them choose to use their dividend cheque to make a real difference for climate change and the future of this province. That's \$41 million to save special places!

TLC has partnered with This Community Cares Foundation to create the Special Places Campaign – an initiative aimed at giving B.C. residents an easy way to help build stronger, healthier, and sustainable communities across B.C. with their \$100 cheque. This Community Cares Foundation will distribute funds directly

to projects around the province that help people move beyond temporary shelter to more secure housing, self-reliance, and independence. TLC will use the funds to further the acquisition and permanent protection of community green space, natural areas for our children to play, and local agricultural lands.

With this broad approach, the partnership can address climate change in both direct and indirect ways. Protecting special places helps retain green spaces, forests and trees, and agricultural lands which help clean our air and water and, to some extent, capture carbon from the atmosphere. Ensuring the retention of productive farmland allows food to be grown close to market, thus reducing transportation pollution while helping to ensure food security. Pairing these environmental approaches with the development of more sustainable

social communities ensures that we, as a society, will be better able to address the challenges of climate change as we experience them.

Imagine: green spaces for children to play, protected agricultural lands producing high-quality local foods, and homeless families being given a chance to build a life, all for \$100. This is a rare opportunity that the government has given to B.C. residents. Let's join together and make something truly magical happen!

***To donate your \$100 Climate Action Dividend visit
www.specialplacesbc.ca, or
use the mail-in coupon on the
back of this newsletter. ■***



In late June, B.C. residents will receive a \$100 Climate Action Dividend. Discover the difference your cheque can make at: specialplacesbc.ca

Executive Director's Message



The Land Conservancy
Head Office
301-1195 Esquimalt Road
Victoria, BC V9A 3N6

Ph: (250) 479-8053
Toll-free: 1-877-485-2422
www.conservancy.bc.ca

Charitable Registration #
88902-8338 RR0001

Honorary Patron

His Honour,
Steven L. Point, OBC
Lt.-Governor of B.C.

Honorary President

Iona Campagnolo, PC, OM, OBC
(former Lt.-Governor of B.C.)

Board of Directors

Brent Nichols - Chair
Henry Ellis - Vice Chair
Judith Brand - Secretary
Colin Gabelmann - Treasurer
Peta Alexander Karin Lengger
Michelle Ellison Sue Morhun
Deborah Griffiths Murray Rankin
Chris Hamilton Stuart Stark
Richard Hankin George West
Vicky Husband Jim Wyse
Lindsay Jones Dave Zehnder

Editor

Tom Arnold

Production Coordinator

Valerie Tabone

Graphic Design

Jenn Hobson

Advertising

Valerie Tabone

For advertising rates and
information, please e-mail
editor@conservancy.bc.ca

This newsletter is printed on recycled
paper.

Sometimes in life – if you're lucky – you get a chance to make history and change the world. I believe one of those opportunities will arrive in your mailbox very soon in the form of a \$100 cheque from the Government of B.C.

I realize that your \$100 Climate Action Dividend may not seem like a lot of money. And certainly it can be difficult to think about doing something meaningful with your cheque when some polls suggest that most of the 4.1 million people who will receive a cheque will spend the money on beer or gas. But before you decide where to spend your money, I'd like to share a few thoughts with you.

Eleven years ago I found myself watching as countless wilderness areas, heritage sites, and agricultural properties that mattered to local communities across the province were being lost. So I donated \$100 in the hopes of creating an organization that could protect these special places before it was too late. Initially only four people joined with me in making a \$100 gift, but the momentum that was created from that moment was enough to spark the growth of *TLC* – an organization that has now protected over 100,000 acres on over 250 properties around the province.

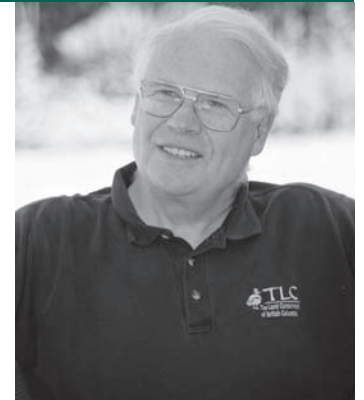
Today, we are all watching as we see the growing impacts of climate change. You, me, and nearly 4.1 million fellow B.C. residents are about to receive a \$100. If even a small percentage of us choose to invest our money in something meaningful, the potential for real change will be staggering.

TLC was created with just \$500. Imagine what \$2 million...or \$10 million...or \$41 million could do!

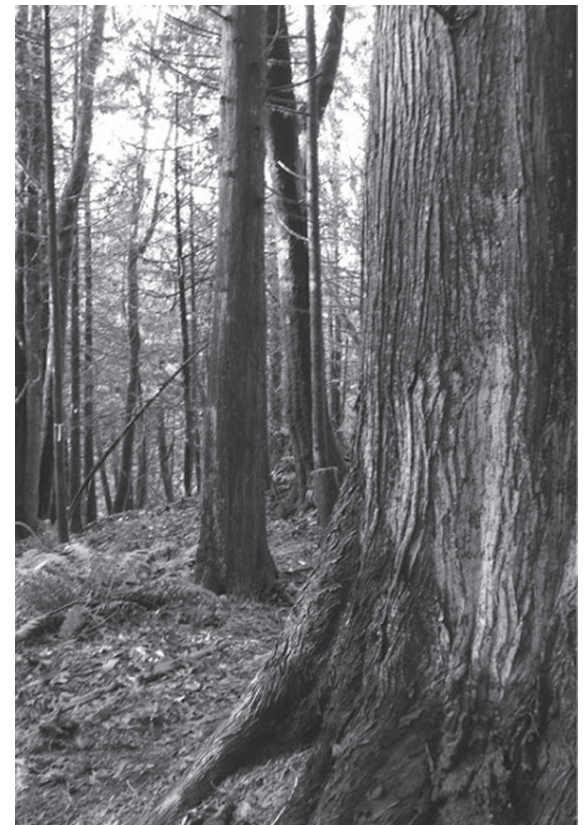
When my \$100 cheque arrives, I know I'm going to use it to try and change the world. Will you join me?

www.specialplacesbc.ca

Your \$100 Climate Action Dividend could help ensure the survival of many more special places like West Creek Wetlands near Langley B.C. *Photo TLC files*



Bill Turner,
TLC's Executive Director



TLC and Climate Change

How saving special places is a critical part of addressing climate change

by Kathryn Martell
Kootenay Area Manager

What role do natural ecosystems play in mitigating and adapting to climate change? How is TLC's work an essential strategy to prepare for global warming? The answer to both of these questions is *biodiversity*.

We have all noticed the effects of the climate changing around us and we are searching for the best way to address this challenge. Even the most stringent emission reduction efforts cannot avoid climate change, due to the carbon dioxide already built up in our atmosphere. Because we have so little time to slow climate change, we need to focus our efforts on protecting the carbon that is already stored in ecosystems, and ensuring that species and communities are able to adapt to changing conditions. TLC's work protecting natural areas is an essential and cost-effective way to mitigate and adapt to climate change.

In a recent report by experts Sara Wilson and Richard Hebda*, these authors conclude that "keeping healthy natural ecosystems, especially forests, is the best [and most cost-effective] thing we can do with land to mitigate, adapt, and build resiliency to global warming". Intact natural ecosystems store more carbon, and absorb more carbon dioxide, than disturbed areas. Protecting natural areas ensures that these critical processes continue, and also prevents carbon emissions when areas are converted by logging or development.

But taking action on climate change involves more than just carbon storage and uptake: we must ensure that plants, animals, and human communities are able to adapt to inevitable, and unpredictable, changing conditions. Protecting natural areas – through acquisition, conservation covenants, and the other tools TLC uses to protect special places – gives us a twofold benefit when it comes to planning for climate change. Healthy, diverse ecosystems are more resilient to change. They are better able to recover from sudden changes; they have the biodiversity to adapt to slower change; they will provide 'genetic reservoirs' as species distributions shift; and they provide flood prevention, erosion control, and other services that reduce the impacts of climate change. By protecting existing ecosystems, TLC is working to provide a wide range of habitats, and connecting corridors, for plant and animal migration.



So what is the best climate change action you can take? Reduce your emissions. Build your community's sustainability and adaptability to change. Help TLC to protect the intact, functioning, diverse special places that provide our best opportunities for successful adaptation.

**Sara is a leading Canadian researcher on Ecological Economics, which is an emerging field that values nature's services. Dr. Richard J. Hebda is an adjunct associate professor, Biology, Schools of Earth and Ocean Sciences and Environmental Studies at the University of Victoria ■*



Saving special places like TLC's Horsefly River property helps protect healthy and diverse ecosystems that are vital to the survival of B.C.'s wildlife as they face the challenges of climate change. Photo Cornelius Iwan

Protecting Madrona Organic Farm

A TLC Member's perspective on saving a vital piece of BC farmland

by Karen Platt
TLC member, writer/journalist, member of
"Friends of Madrona Farm Society"

A few months ago, I heard a rumour that Madrona Farm – a place that was supplying me with an incredible amount of organic produce in the dead of winter - was in danger of being sold. About 90% of my family's food comes from local sources and I'm alarmed at the mounting pressure on farmers and on the land. And so, when I was asked to join the newly forming 'Friends of Madrona Farm' – a Society being created for the purpose of raising \$1.4 million to buy this remarkable farm in partnership with TLC – I couldn't say no.

For those of us who believe in supporting small farms and farmers, Madrona tells why; it is an extraordinarily productive, ecologically sound, biologically diverse small piece of urban farmland. In this world gone wrong, full of almost universally bad environmental news, it is a shining example of what's gone right.

David and Nathalie Chambers are true eco-farmers – Madrona Farm's 27 acres include Douglas fir and Garry oak ecosystems, four natural ponds and a wooded corridor of diverse native tree species which they began planting in 2004. Over 130 fruit trees now stabilize the farm's southwest facing slope. Madrona is home to many species of birds, including great horned and screech owls, eagles, red-tailed hawks, and herons.

Madrona Farm has been a fixture on Blenkinsop Road since David's

grandparents, Lawrence and Ruth Chambers, bought it in 1952. Lawrence died in 1982 and the farm was leased for hay production. Lawrence and Ruth's three sons couldn't escape fast enough – it's well-known that farming often skips a generation. And, in 1999, grandson David moved to the farm to take care of Ruth and decided he would restore the family farmlands.

Ruth died in 2002 and ownership of the farm was passed on to David's father and two uncles; they, in turn leased the property to Dave and Nathalie to farm and it has flourished. Last year, Dave and Nathalie produced over 128,000 pounds of 105 varieties of food on this land, which fed thousands of loyal customers at their roadside stand for 11 months of the year. But now, the brothers want to sell and although the property is listed in the ALR, there are no requirements to keep the land in food production.

TLC is the only land trust in BC with a mandate to protect agriculture for agriculture's sake. Madrona is a test of our collective desire to protect farmland for farming. How much do we really care about local food production? What are we willing to do to protect our rapidly vanishing farmlands?

Author Bill Bryson said



Madrona Organic Farm's operator David Chambers serves one of the thousands of customers he supplies with organic produce every week. TLC is partnering with supporters of the farm to ensure it stays in agricultural production.

Photo Ramona Scott

"There are only three things that can kill a farmer: lightning, rolling over in a tractor, and old age." I'd like to think that apathy won't be the fourth. The Friends of Madrona Farm Society need your support. In this time of paralyzing gloom and doom, this is one tangible action you can take that will make a difference – forever.

To make your gift to keep Madrona Farm in agricultural production, visit:
www.conservancy.bc.ca/donatetomadrona ■

GREGGS

Furniture & Upholstery

Specializing in
Re-upholstery, Drapery
Fine Upholstered Furniture

2333 Government Street
Victoria, BC V8T 4P4
Phone: (250) 388-7365
Fax: (250) 388-7361
Toll Free: 1-888-267-2424

www.greggsfurniture.com

Cross Border Success

TLC pitches in to protect Washington State's Lily Point

by Heather Skydt
External Relations Specialist

Nature transcends all political borders. Sometimes, the human desire to save a special place does, too – particularly when the special place is as spectacular as Lily Point.

Located at the southeast corner of Point Roberts in Washington State, Lily Point is a breathtaking 90-acre marine shoreline property – with 40 acres of attached tidelands – that features a 200-foot sandy cliff, and a beautiful mature forest of big-leaf maple, Douglas fir, and red alder trees. Just 35 km from Vancouver, it is one of only three exclaves in the United States, cherished equally by the Canadians and Americans who live in the area.

The site is also vital habitat for a wide variety of marine wildlife, including sea stars, Pacific herring, Chinook salmon, orcas, and birds like the great blue heron, bald eagle, and marbled murrelet. In late April 2008, Washington's Whatcom Land Trust purchased the property to protect it as a marine reserve and public park. TLC assisted with the purchase by collecting

over \$30,000 in donations from Canadian citizens interested in saving this very special place.

The Whatcom Land Trust now holds a conservation easement to protect and preserve the ecological attributes of the property, and will keep the site open to the public via hiking trails. Find out more about this incredible property, and the diverse partnership that made its protection possible; visit www.whatcomlandtrust.org. To make your donation for the continued maintenance of Lily Point, call TLC at 1-877-485-2422. ■

Protect Your Farm Land

Many BC farmers have been caring for their land for generations, and would like to see it remain in agricultural production for future generations. To explore options for protecting your land with TLC call Carla at 1-877-485-2422.



saving the world, one investment at a time

At the Pinch Group, we combine a passion for social and environmental issues with the best practices of sensible investing. And we've been doing it successfully for more than 20 years. Learn more at: www.pinchgroup.ca

The Pinch Group

BC's leaders in socially responsible investing

Toll free: 1-866-515-2420 Email us: pinchgroup@raymondjames.ca

RAYMOND JAMES Member CIPF

Top Ten B.C. Summer Fun Getaway Ideas from TLC

1. Bike Victoria's Galloping Goose Trail and camp at Sooke Potholes
2. Visit Burnaby's famed Eagles Estate Heritage Garden and rent a canoe to paddle around Deer Lake
3. Rent your own private island getaway – South Winchelsea Island near Nanaimo
4. Take a Nature Cruise to beautiful locations near Victoria and Vancouver
5. Visit the world's oldest intact passenger sternwheeler, the SS Moyie in Kaslo
6. Learn about organic farming on a Madrona Farm Conservation Holiday
7. Go for tea at Keating Farm Estate in Duncan
8. Tour Victoria's exquisite Abkhazi Gardens
9. Get out your gear and climb Penticton's Skaha Bluffs
10. Escape for a weekend of fly fishing at Nimpo Lake

For more information, visit www.conservancy.bc.ca or call 1-877-485-2422.

Creekside Rainforest is Saved

Salt Spring Island treasure to become nature reserve

by Heather Skydt
External Relations Specialist

TLC wears many hats to save special places: fundraiser, benefactor, facilitator, administrator, and more... whatever it takes to get the job done. In the case of our latest project, Creekside Rainforest on Salt Spring Island, *TLC* played the role of chief negotiator.

Late last year, working with local landowners, *TLC* secured a purchase agreement for the vital property, allowing the local community to swing into action and raise the necessary funds to purchase the site. On March 31, 2008, thanks to funding assistance from the Salt Spring Island Conservancy, the Islands Trust Fund, the Salt Spring Foundation, and the citizens of Salt Spring Island, *TLC* was able to complete the agreement and purchase almost 20 acres of mature temperate rainforest. The acquisition protects a salmon-bearing creek, an important First Nations site, and habitat for several vulnerable species like the red-legged frog. The site itself will become *TLC*'s newest Nature Reserve.

"It has been amazing to see the community coalition, led by Maureen Moore, unite citizens to save a special place in their community. This is what makes our work at *TLC* worthwhile," says Bill Turner, *TLC*'s Executive Director. "Working through the highs and lows of a fundraising campaign can be stressful, but it all disappears when you see the smiling faces of residents, especially the children, after a property is saved."

TLC also provided administrative support to the protection effort, processing over 1,000 individual donations from across Canada, the United States and Europe. The interest in protecting a piece of temperate rainforest so rare that it is found on less than 1% of the Earth's surface generated widespread community interest. A bevy of bake sales, art shows, musical evenings, literary readings, and other community events, all collected funds for the purchase. Local schools got involved. Students from the Salt Spring Centre School sold handmade cards and birdhouses to raise funds, and children



Creekside Rainforest will continue to be a place where kids can learn about nature thanks to the joint efforts of Salt Spring Island residents and *TLC*. Photo Carla Funk

from the Fulford Elementary School Nature Club made a generous donation, too.

Finally, to ensure that Creekside Rainforest will survive for many generations to come, *TLC* will don two new hats: ecologist and educator. *TLC* will continue working with the local community to develop a long-term stewardship and management plan for the site's sensitive ecosystem, and nature tours will be created to educate individuals of all ages about the importance of protecting plant and animal life. ■

ijs ACME SAFE Ltd.
Locksmiths

Ian J. Smale, C.L.

President
250-383-6899

www.acmesafe.ca
ijsmale@acmesafe.ca

2 Stores / 3 Mobile Service Units / Safe Sales and Service
Complete Locksmithing service

Bonded & Licenced

Serving Victoria Since 1968

Downtown
815 Fort Street
Victoria, BC V8W 1H6
Ph. 250-383-6899
Fax 250-383-1850

Colwood Plaza
318 - 1913 Sooke Rd
Victoria, BC V9B 1V9
Ph. 250-478-9709
Fax 250-474-1400

BHC

BERGE | HART | CASSELS

LAWYERS MEDIATORS

Lynda Cassels, B.A., LL.B.

Accredited by the Law Society of British Columbia as a Family Law Mediator

250 388 9477 | fax: 250 388 9470 | email: lcassels@bhclaw.ca | www.bhclaw.ca

1207 QUADRA STREET, VICTORIA BC V8W 2K6

Community Action Hero Update

Sales Sings for Sooke

In April, patrons of Victoria's Mayfair Mall were treated to an outstanding acoustic performance by Haley Sales – a young, up-and-coming singer/songwriter from Vancouver Island – who played a benefit concert for *TLC*. Haley follows in the footsteps of other great Canadian female performers who have supported *TLC*, including Nelly Furtado and Sarah Harmer.

At just 20 years old, Haley has performed around the world, interviewed the Dalai Lama, written and produced her debut album, *Sunseed*, and won numerous awards including “Female Vocalist of the Year” at the Vancouver Island Music Awards.

During the concert, Haley talked about her passion for the environment. Living on a Vancouver Island organic blueberry farm, she has seen changes in the landscape around her and watched

many distant hills turn from “green to brown [with housing development]”. Watching this dramatic change inspired her to get involved with land conservation. Donations collected in honour of Haley's performance were put towards protecting the Sooke Hills and other special places around B.C. Thank you Haley! ■

Editors Note: TLC would also like to extend heartfelt thanks to Mayfair Mall. In addition to hosting Haley's recent performance, Mayfair is currently offering re-usable shopping bags which are available at the Mall in exchange for a donation to TLC.



Singer/songwriter Haley Sales recently performed a free benefit concert for *TLC* at centre court in Victoria's Mayfair Mall, becoming *TLC*'s latest Community Action Hero.

TELUS gives day of service for Craigflower Manor

On May 31st, over 8000 TELUS employees, alumni, family and friends participated in 100's of volunteer activities across Canada to make a difference in their communities. In Victoria, *TLC*'s Craigflower Manor received a spring cleaning thanks to local TELUS team members who gave

up their Saturday to volunteer at TELUS' annual “Day of Service”.

Not only did TELUS volunteers roll up their sleeves to help to beautify the grounds of this historic site, but *TLC* was also presented with a cheque for \$14,212. This gift includes generous donations from employees

that were matched dollar for dollar by TELUS. Thank you to TELUS and their employees for their support and enthusiasm!

Editor's note: Why not get your employer involved with saving BC's special places too? Take your donation receipts to work and ask your employer to match them.



Photo by Dennis Power

Whether or not you own the special place you want to protect, you can make a difference by remembering *TLC* in your Will.

Find out how to create **your** legacy for future generations by contacting Carla at 1-877-485-2422.

Your personal TLC contacts:

Tell us what you want to see

In the Spring 2008 edition of the LandMark, an error resulted in the creation of dark green boxes throughout the newsletter, making some areas of text very difficult to read. The mistake spurred many calls from TLC Members letting us know about the problem, and suggesting alternative colour schemes for future editions. Thank you!

That got us thinking. We often get calls about the stories that TLC Members really like. And occasionally, we get calls about stories that people really don't like. But we haven't given you the opportunity to tell us if there's anything else that you'd like us to report on in your quarterly newsletter.

So here's your chance. Whether it's a project you'd like an update on, a report about how TLC does its work, or more about the people behind the scenes, give us a call or send us an email and tell us what you want to see. We look forward to hearing from you: 1-877-485-2422, or membership@conservancy.bc.ca.

Cassie + Tom



Photo Valerie Tabone

TLC is honoured to be the recipient of donations in memory of:

Catherine Traunweiser
Cynthia Ross
Dorie Crockett
Dorothy Margaret Snyder
Doug Morgan
Elizabeth Salmon
Esther Wightman
Irene Malthouse
Jackie Irvine
Jennifer Naiberg
John Buckley
Margaret Ralston
Pamela Charlesworth
Robert Look
Steve Morrison

To remember your loved one with a special gift, call 1-877-485-2422, or visit www.conservancy.bc.ca

Give BC some extra TLC

To help save even more special places, I'd like to make a donation of:

\$35 \$50 \$100 \$ _____

With this gift, I would like to renew my TLC Membership.

My preferred method of payment is:

Visa MasterCard Cheque. *Please make payable to The Land Conservancy.*

Card # _____ Expiry Date _____

Name on Card _____ Signature _____

My contact details:

Name: _____ Member # (if known): _____

Address: _____

City: _____ Province: _____ Postal Code: _____

Home Phone: (_____) _____

E-mail: _____

Thank you!

Please return completed form to: TLC, 301-1195 Esquimalt Road, Victoria, BC V9A 3N6

TLC respects your privacy. We will never sell, trade, or rent your name to another organization. I-00026

Due to CRA Regulations, the first \$35 of your membership gift (\$50 for families) is not tax receiptable. Charitable registration # 88902-8338 RR0001



Greg Rowland

2481 Beacon Avenue • Sidney BC Canada V8L 1X9 • phone: (250) 665-6868
fax: (250) 665-6858 email: greg@gregrowland.ca www.gregrowland.ca
TLC MEMBERS: 25% of my commission goes to TLC!



Salmond Ashurst
LAWYERS NOTARIES PUBLIC

Derek E. Ashurst

BA, LLB

1620 Cedar Hill X Rd.
Victoria, BC V8P 2P6
tel: (250) 477-4143
fax: (250) 477-4451

derek@salmondashurst.com

A proud supporter of TLC!