

# Contact us

## TLC Head Office

301-1195 Esquimalt Road  
Victoria, BC V9A 3N6  
Phone: 250-479-8053  
Fax: 250-744-2251  
Toll Free: 1-877-485-2422  
Email: [admin@conservancy.bc.ca](mailto:admin@conservancy.bc.ca)

## Lower Mainland Regional Office

Eagles Estate Heritage Garden  
5655 Sperling Avenue  
Burnaby, BC V5E 2T2  
Phone: 604-733-2313  
Fax: 604-299-5054  
Email: [lowermainland@conservancy.bc.ca](mailto:lowermainland@conservancy.bc.ca)

**[conservancy.bc.ca](http://conservancy.bc.ca)**

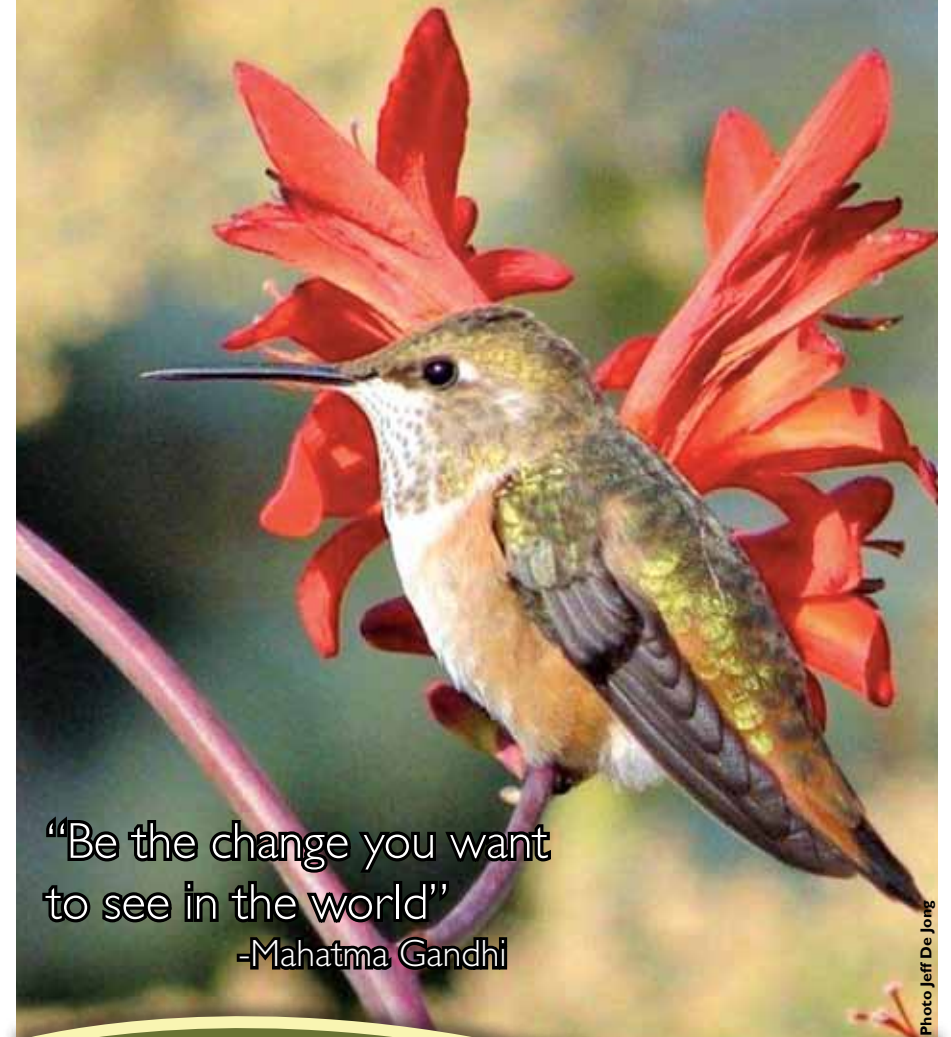
It is important to correctly identify the charity using the full legal name. In the case of TLC the correct name is: **TLC The Land Conservancy of British Columbia of 301-1195 Esquimalt Road Victoria, BC V9A 3N6, federal charity number 88902 8338 RR0001**

Sunset, Jordan River, Vancouver Island  
Photo Josh Lewis

© TLC March 2011

 **TLC The Land Conservancy**  
*Special Places. Forever, for Everyone.*

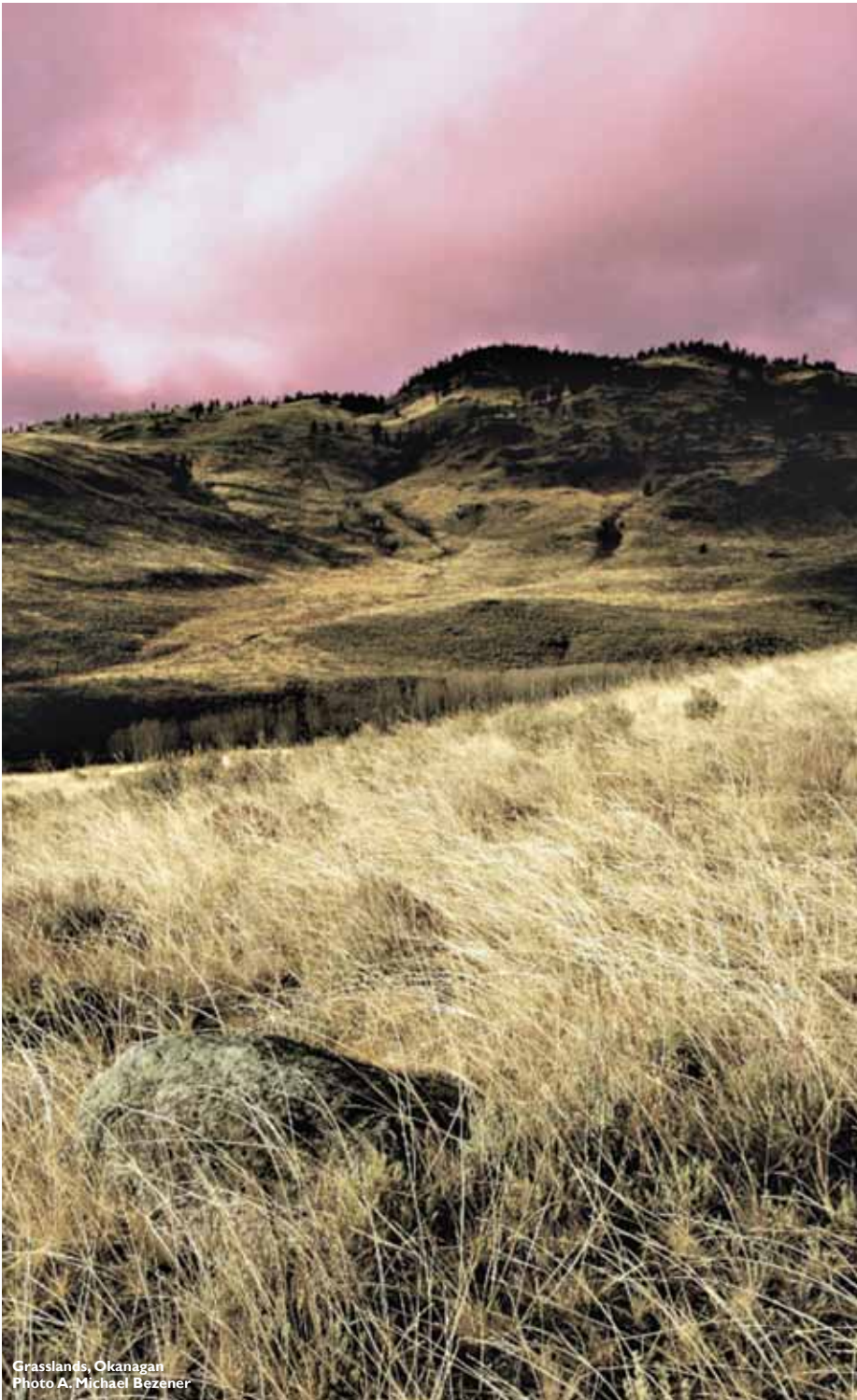
# Your Legacy



“Be the change you want  
to see in the world”  
-Mahatma Gandhi

Photo Jeff De Jong

**[conservancy.bc.ca](http://conservancy.bc.ca)**



Grasslands, Okanagan  
Photo A. Michael Bezener

## A Lasting Legacy for Future Generations

Gifts in the form of bequests leave a lasting legacy by saving special places forever. When people remember TLC The Land Conservancy of British Columbia in their Wills, they are supporting the ongoing efforts to protect invaluable natural areas, historic landmarks, and vital agricultural lands throughout our beautiful province.

Founded in 1997, TLC is modeled after the National Trust in Britain. TLC receives no direct funding from government. It is only because of legacies, individual donations, membership fees, and grants that we have been able to protect over 300 special places in B.C.

When considering planned giving and estate options, people are often inspired by Mahatma Gandhi's quote: "Be the Change You Want to See in the World". These simple, yet profound words remind us of the incredible impact we can have on the world around us. As people who care about B.C.'s natural and cultural wonders, we have the opportunity to shape our communities, make a difference, and leave this province an even better place for future generations.

At TLC, we want to be your agent for change, and by empowering individuals into action alongside us to save special places, the impacts are greater; the commitment deeper; and the affects more widespread. We are here to create a change in consciousness - a culture of conservation for our grandchildren and their grandchildren. Leaving a gift in your Will to TLC will see this vision fulfilled.

I hope that this booklet will work as a useful guide in your will-making process as well as show you how valuable your support is. We are truly grateful for your consideration of this special gesture. If you have questions or require assistance, please do not hesitate to contact me. I will be pleased to help.

John Keller,  
Planned Giving Coordinator  
TLC Head Office, Victoria, BC  
1-877-485-2422  
jkeller@conservancy.bc.ca



Horsefly River Riparian Conservation Area,  
Photo Cornelius Iwan



## Melda Buchanan (1924 - 2004)

Melda left her land along Willemar Bluffs, Vancouver Island, to TLC in her Will. In keeping with her love of the natural world, she was very deliberate in her bequest and left careful instructions. TLC was to place a conservation covenant on the property ensuring that the land will remain in its natural state, with specific building restrictions for a single residence. At Melda's request, a realty appraisal determined the market value of the land and first option to purchase was given to two of Melda's friends. We were delighted that her friends agreed to the purchase. Proceeds from the sale have been used toward the Christmas Hill Garry Oak Meadow project in Saanich, the acquisition of Little Qualicum River estuary, the protection of the Sooke Potholes, and the acquisition of the Horsefly River Riparian Conservation area. A contribution has also been made to TLC's endowment fund to enable us to continue monitoring our covenant on her property and others. All decisions about where the funds were to be directed were made together by Bill Turner (TLC Executive Director) and one of Melda's trusted friends.

Even though she is no longer with us, she is living proof that one person can make a difference. Melda died in April of 2004 but her spirit very much lives on in the memory of all those whose life she touched and inspired, and through the legacy of the protected lands she leaves behind. TLC strives to maintain the high values that defined Melda's life and we feel privileged to be a part of ensuring that her passion for the land will live on in future generations through this generous donation.



Wycliffe Wildlife Corridor, Kootenays  
Photo Kathleen Sheppard

## Simple Tips to Making your Will

Everyone should have a Will - and keep it up to date. It is the only way to make sure that your wishes are followed after your lifetime. Making a Will is neither difficult nor time-consuming, especially when you consider how it can protect you. The process can be broken down into a number of simple steps.

**1. Hire a lawyer.** Lawyers come with a wide range of skills, so be sure to look for a one that specializes in Wills and Estates. Putting together an average Will is not a complicated process and most lawyers would be happy to give you an estimate of fees in advance of your appointment.

**2. Work out the value of your estate.** Your lawyer or financial advisor can perhaps assist you with this exercise. This should be the estimated total sum of your property, money and possessions at the end of your lifetime, less anything that you owe such as an outstanding mortgage or loan.

**3. Decide who you want to benefit from your Will.** As well as family and friends, many people choose to remember charities and causes they have held dear throughout their lives. Charitable giving can also help reduce the tax payable by your estate.

**4. Choose your executor(s) to make sure that your Will is properly discharged.** Your executors can be professional advisors such as a lawyer, or relatives, or friends. It would be best if TLC was not named as executor.

**5. Keep your Will safe.** Make at least two copies and keep the original in a safety deposit box or safe. Tell your executors where the original Will can be found.

**6. It is vital that you keep your Will up to date.** This means you should review it periodically to make sure it continues to reflect your wishes and your current circumstances. For instance, if you move house, your marital status changes, or a friend or family member passes away, you may need to change your Will. Similarly, the birth of a child or grandchild may trigger an update of your Will.

**7. You can also update your Will at any time.** It is simple to make additions or amendments to your Will. Your lawyer will be able to give you guidance. It is important to correctly identify the charity using the full legal name. In the case of TLC the correct name is: *TLC The Land Conservancy of British Columbia of 301-1195 Esquimalt Road Victoria, BC V9A 3N6, federal charity number 88902 8338 RR001*



Keating Farm Estate, Cowichan Valley, Vancouver Island  
Photo joshmcculloch.com



Cowichan Cabin, Vancouver Island  
Photo Susan Kangesniemi

## Marian Bina Bratt (1911 - 2007)

### A Lasting Gift for the Cowichan River

A person's life can emulate nature; the beauty, the bounty, and the harmony. And when someone lives in this way, choosing the simple life in tune with the land, it seems only natural that their final gift would be back to nature. In this way, Marian Bina Bratt's legacy will forever live on through the Cowichan River property she helped to protect.

Before moving to Vancouver Island, Marian ran a hunting and fishing lodge in B.C.'s interior with her husband, living off the grid without refrigeration. She gardened in the summers, pickled in the fall, and lived the life that many of us seem to long for today.

After her husband's passing, Marian relocated to Victoria, taking residence in an original settler's 1914 cottage where she lived and gardened to an impressive age of 96.

In her spare time Marian could be found mountain climbing in the Cowichan Valley. She cared deeply for the area's waterways and wished to see them protected. It is because of this Marian's nephew chose to direct his aunt's TLC bequest of over \$50,000 to help with a property purchase on the banks of the Cowichan River.

The property is the second parcel acquired by TLC that has become part of the protected green space paralleling the river between Duncan and Lake Cowichan. The first was purchased by TLC in 2002 and is the site of TLC's Cowichan River cabin. The river is of incredible importance to wildlife, the community, and cultural heritage of the area.

By remembering TLC in her will, Marian's generous gift will make a lasting difference for the Cowichan River. TLC is profoundly grateful for Marian and donors like her who bestow their precious gifts to save the special places that they care about in British Columbia.

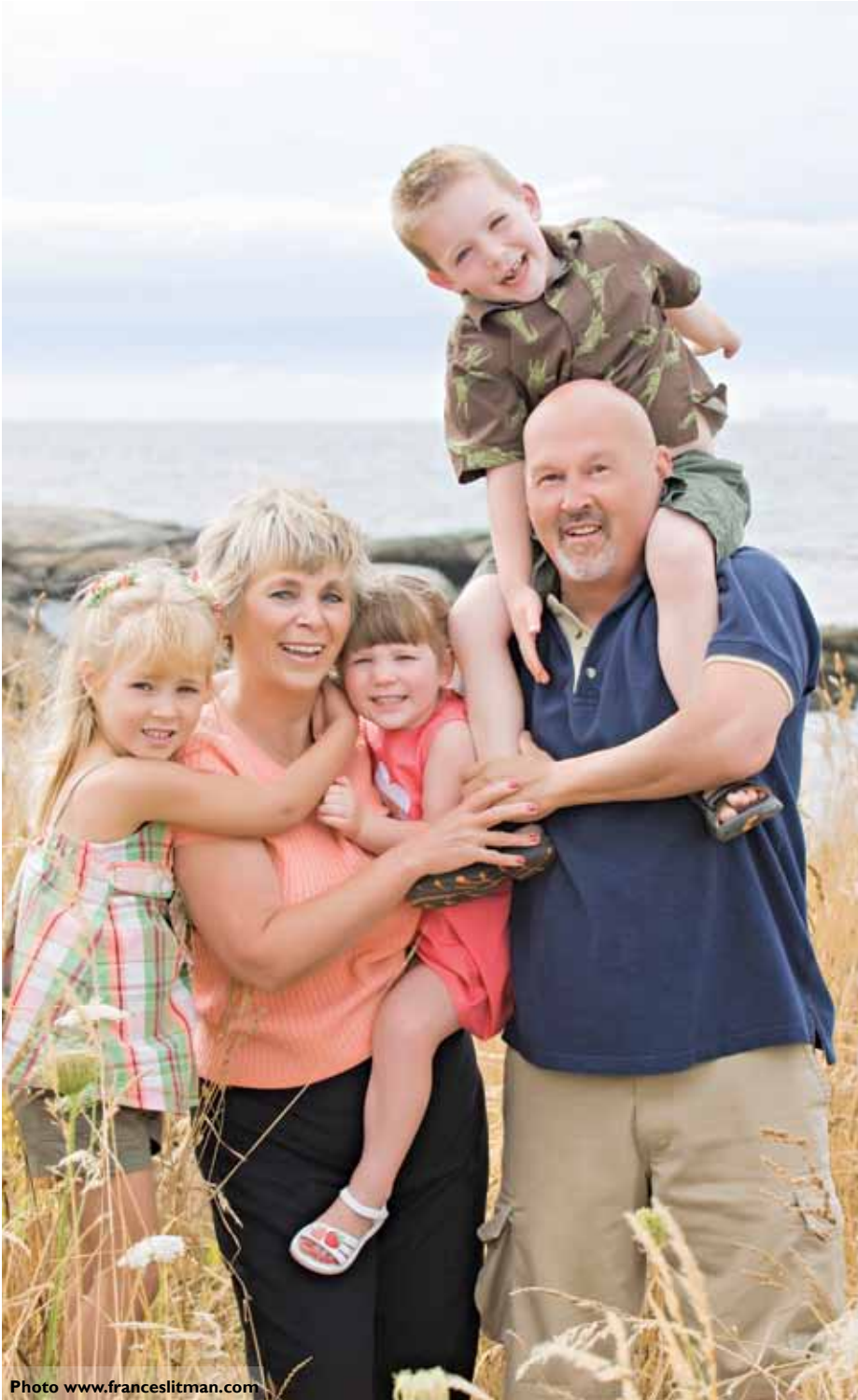


Photo [www.franceslitman.com](http://www.franceslitman.com)

## Remembering TLC in your Will

The donations that we receive in Wills hold huge potential for the future of TLC. The majority of properties that are owned by TLC are held inalienably, so cannot be sold or mortgaged unless compulsorily. This means we provide perpetual care of them. This is a very costly and continuing responsibility. Legacies can make a crucial contribution. They allow us to provide for the maintenance of our properties, carry out special projects and fund new acquisitions. They also allow us to move quickly when once-in-a-lifetime opportunities arise such as the Sooke Potholes (Vancouver Island) purchase.

When you make a bequest, a tax receipt is given for the full amount of the donation and can be claimed on your final tax return. Any unused credit can be carried back one year and applied to taxes owing in that year to obtain a tax refund for your estate.

### Ways to leave a donation to TLC

#### 1. A straightforward gift to TLC for general purposes.

This way TLC can use your gift where it is needed most. Many people choose not to leave a stated sum of money but rather to leave a share or the residue. This is because, unlike most other donations in Wills, its value will not be affected by inflation.

#### 2. Leaving a donation in your Will to a specific property, region, campaign or aspect of our work.

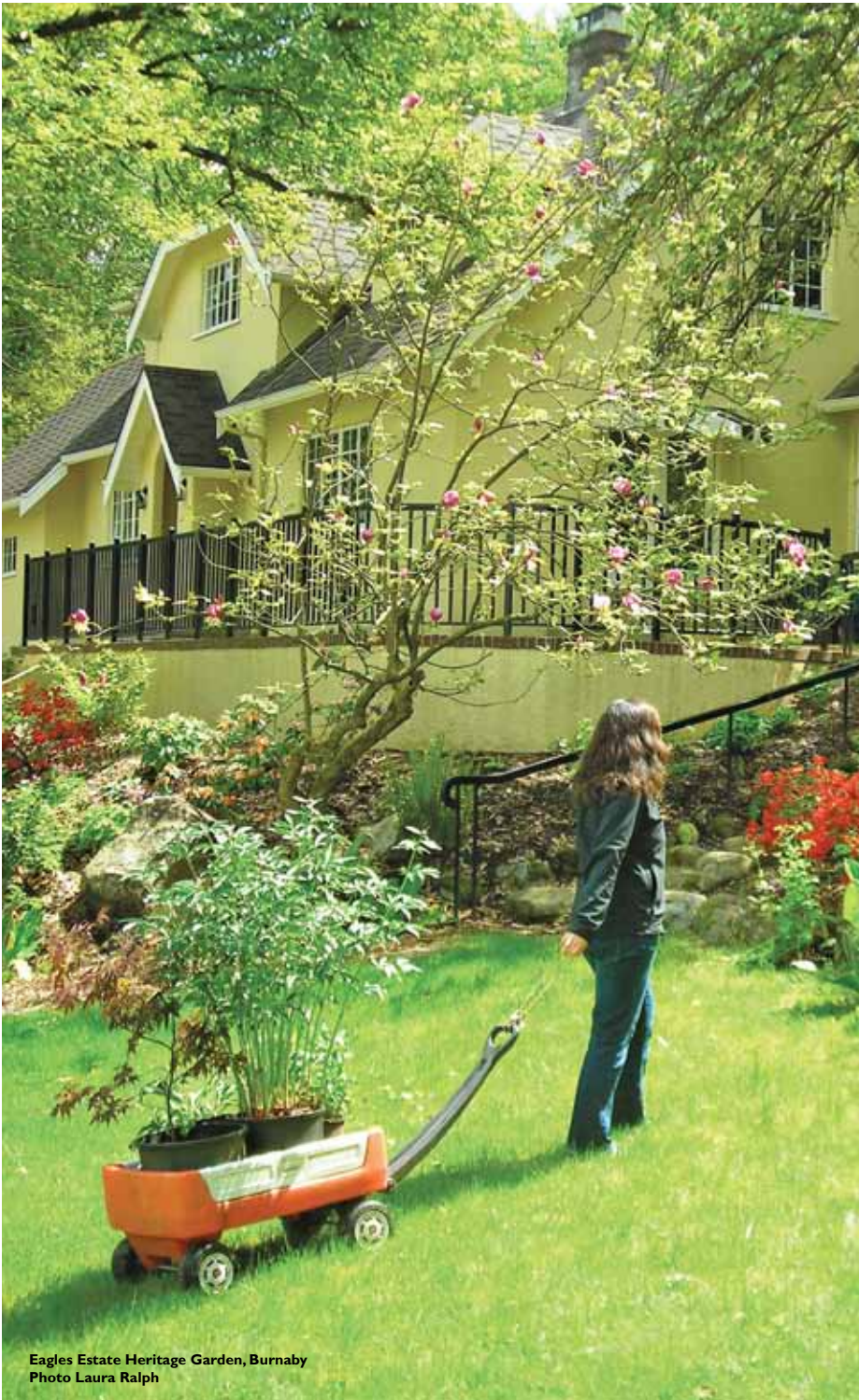
Perhaps you would like to contribute to the upkeep of a particular region or heritage property that you remember with particular fondness. You may wish to provide habitat for species at risk, help to conserve salmon stocks, provide for spectacular recreational opportunities or protect vital farmland for future generations.



Photo A. Michael Bezaier



Photo A. Michael Bezaier



Eagles Estate Heritage Garden, Burnaby  
Photo Laura Ralph

You can instruct us to use the funds for only a specific purpose or you can tell us to do our best but if we cannot meet your request, to use our discretion.

We urge you to speak with TLC staff about designating your gift, to ensure that we will be able to fulfill your wishes. Being too restrictive may limit our ability to make effective use of your gift. When giving a gift requiring perpetual protection (such as an ecologically or culturally significant piece of land) it is important that you talk with TLC staff to make sure that we can accept the gift under the terms you propose.

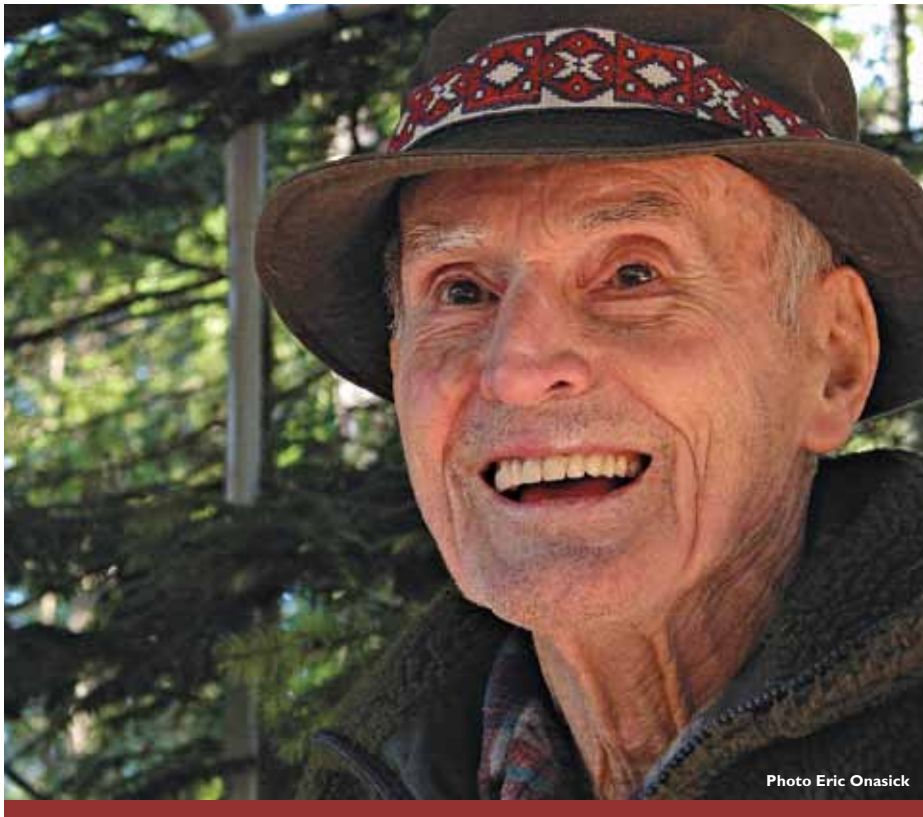
**3. Make a gift of your house or property.** If you own property that is potentially worth preserving in its own right, or

could possibly become a TLC holiday cottage, we would be delighted to discuss this with you. Alternatively, you may simply want TLC to benefit from the sale of your property. It is advised that you contact TLC beforehand to discuss your intentions to ensure that your wishes can be fulfilled.

**4. Make a gift of an item or the contents of your house.** Many people choose to make a donation of chattels (an item or items they own) to TLC in their Will; for instance special belongings such as a piece of furniture, a painting or even the contents of your house. TLC would be pleased to discuss this with you or arrange for someone to visit your home.



Photo Erika Verlinden



## Merv Wilkinson

Wildwood Ecoforestry Site, Vancouver Island

Merv has been committed to sustainable forestry for much of his 92 years. He wanted to see his model forestry operation continue as an educational tool for universities and the community, and he wanted to continue living on the site even though he is no longer able work on the land. TLC was able to tailor a legal life estate for Merv in which TLC owns and operates the estate while he continues to live on the property. Our arrangement saw Merve donate a portion of his land and sell the other portion to TLC over a 10 year period. Arrangements can be tailored for the individual, such as a clause to cover higher medical expenses. Caring donors such as Merv, who have an important piece of property, can ensure that their legacy is in good hands while also receiving some ongoing financial support.

## Next Steps

We hope that you will appreciate that making and updating your Will need not be complicated or expensive, but we understand that you may have further questions or requests. You can contact us by telephone, by email or by letter. Additionally, we would be delighted to welcome you to one of our offices in Victoria, Burnaby, or Penticton.

### TLC Legacy Circle

Individuals making a bequest to TLC are invited to become a member of the “TLC Legacy Circle”, a wonderful group of people who care deeply for the future of our region. Special benefits include an annual private event with TLC’s Executive Director Bill Turner who will update you about the latest land acquisitions and future goals of the organization.

### The Tax Implications of making a donation in your Will

Charitable donations can help to reduce tax liabilities at death. For example, when an individual dies there is a deemed disposition (the estate is valued as if it were sold) and one half of any capital

gains is taxable (subject to exemptions, such as the principle residence). Taxes can be deferred on assets given to a spouse, or entirely eliminated if those assets are given to charities. Gifts of RRSP’s and life insurance are strategies used to offset capital gains taxes payable to the estate.

Detailed information about various types of gifts to TLC is available upon request. These include:

- Cash
- RRSP’s & RRIF’s
- Insurance
- Listed Securities (Stocks, Bonds, Mutual Funds)
- Annuities
- TLC Endowment Funds
- Charitable Remainder Trusts
- Conservation Covenants
- Gifts of Ecologically Sensitive Land

Your professional advisor will be able to give you clear advice on tax implications of various gifts. It is worth noting that you can reduce taxes by giving to a charity whose work you support.